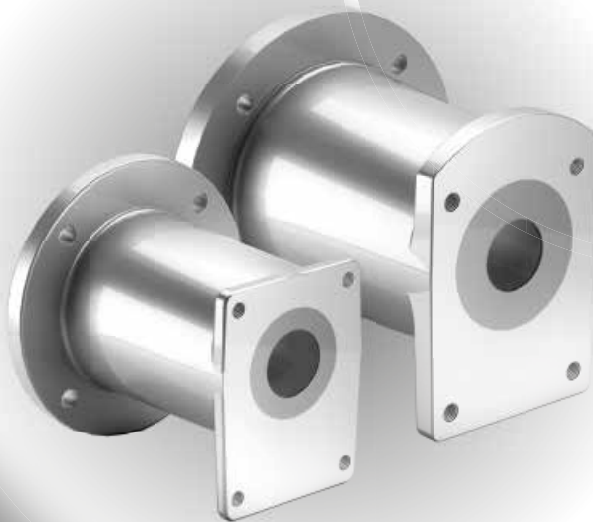




**HARD WORK  
HAS NEVER BEEN  
EASIER**

**LME**  
**BELL-HOUSING  
SERIES**



**PASSION TO PERFORM**



## FEATURES

LME bell-housings are used as a connection between endothermic engines from 3 to 13.5 HP with group 1/2 gear pumps and SAE-A 2-holes pumps.

Made of die-cast aluminium they are typically used on the following applications:



Wood splitter



Powered wheelbarrow and mini dumper



Cherry picker



Wood chipper



Engine pump



Generator

At MP Filtri, every detail is focused on improving the performance of your machinery.

- ◆ Fast delivery times
- ◆ Responsive after-sales service
- ◆ Technical and commercial support always available

## RELIABILITY



# ENGINEERING

**THE LME BELL-HOUSING IS MORE THAN A COMPONENT...**

**... is a flexible solution for an evolving market serving multiple applications, made of high-end materials and designed for harsh environments**

To connect to the sizing software online you can scan the following QR Code:



## UNIQUE BENEFITS

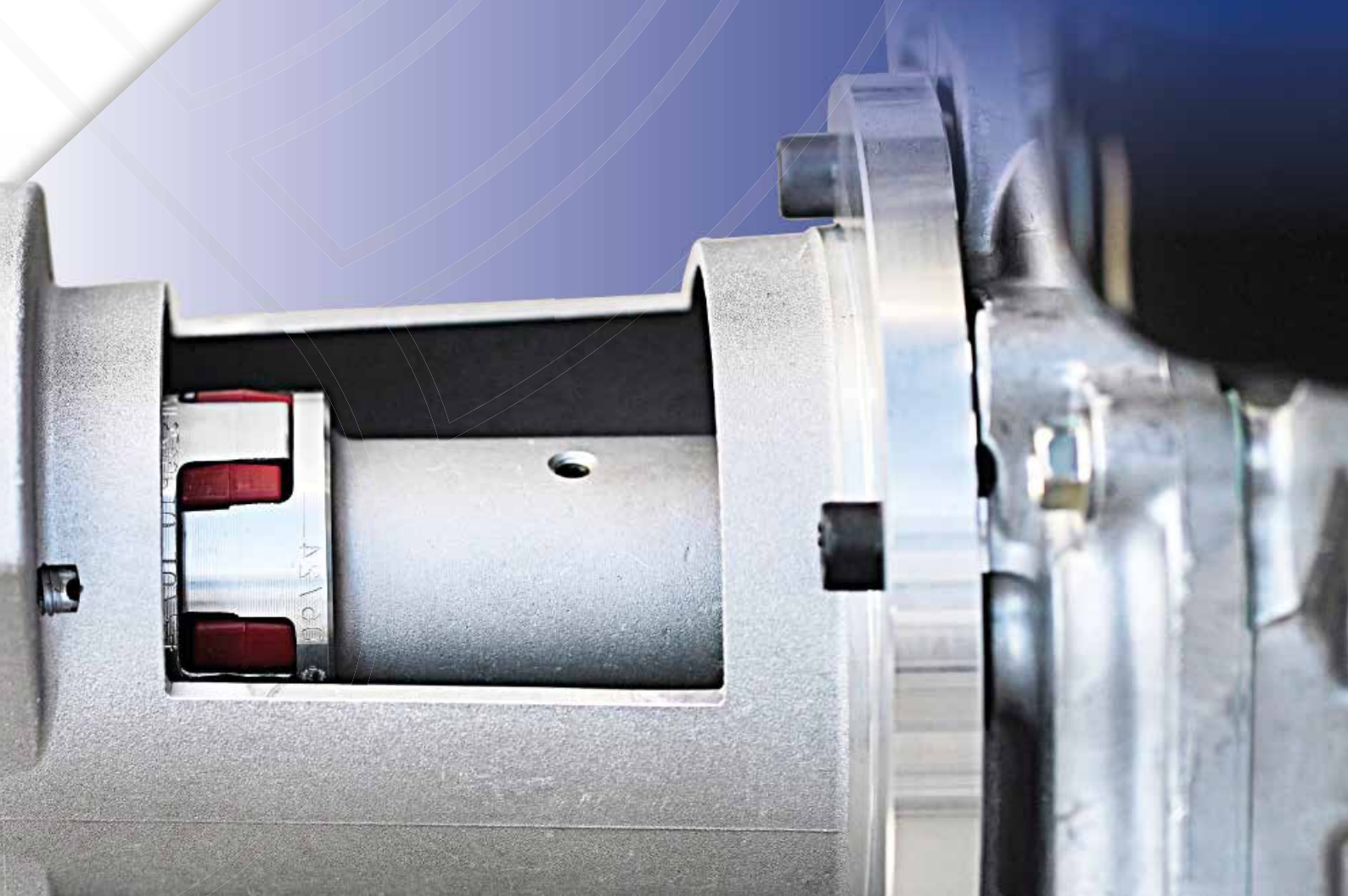
**Quality and Robustness**

**Adaptability: perfect for a wide range of configurations**

**MP Filtri know-how: decades of experience serving customers**

**Dedicated Support: specialised business unit to guarantee continuity and technical support**

**Versatility: supports engines with cylindrical, conical and splined shafts conforming to SAE standards**



# WORLDWIDE NETWORK

CANADA ♦ CHINA ♦ FRANCE ♦ GERMANY ♦ INDIA ♦ SINGAPORE  
UNITED ARAB EMIRATES ♦ UNITED KINGDOM ♦ USA



PASSION  PERFORM

in @ y f



[mpfiltri.com](http://mpfiltri.com)

MP Filtri reserves the right to make modifications to the models and versions of the described products at any time for both technical and/or commercial reasons. For updated information please visit our website: [www.mpfiltri.com](http://www.mpfiltri.com). The colors and the pictures of the products are purely indicative. Any reproduction, partial or total, of this document is strictly forbidden. All rights are strictly reserved.

MF002000105  
EN - 2024.12